

SMART Management of Tooth Decay: -- Silver Diamine Fluoride (SDF) followed by Caries Control Technique (CCT)

Tooth decay is a contagious disease. SMART is a drill-less treatment for tooth decay and the reduction of pain. It combines SDF and CCT. SDF is a clear liquid applied to a tooth for 60 seconds. SDF has been used globally for decades and was cleared for use by the U.S. FDA in 2014. CCT is a protective filling done by the application of a glass ionomer over tooth decay. It is done after the application of SDF and has over 40 years of supporting research.

It has been determined that cavity treatment with SMART is appropriate since access to dental care is not always available and the needs are great. Rather than sending anyone home with active disease, we stop the disease progression with a SMART treatment.

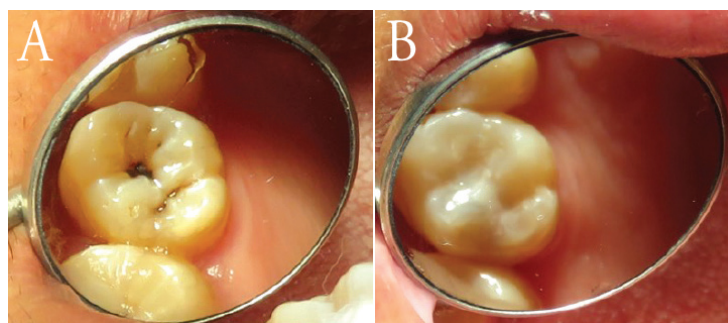
Benefits of SMART

- SMART stops the progression of cavities
 - SDF stains visible and hidden tooth decay making it easy to see
 - Is a No Needle/No Drill alternative
 - SMART treatment can stop tooth pain
 - No known side effects other than cavity staining by SDF
 - CCT involves placing a glass ionomer material (tooth colored) over the arrested tooth decay to fill in the area of missing tooth, increase cavity protection, and improve appearance
 - Causes less damage to teeth than traditional fillings resulting in less nerve damage (abscessed teeth)
- Teeth that cannot have SMART will need care by a dentist and will be noted on take home letter



What to Expect

- SDF only stains cavities, not healthy parts of a tooth
- Treatment stops the spread of disease
- The tooth staining associated with SDF can take days to appear. If SDF inadvertently touches your child's skin, you will see temporary tattooing. This is not a health concern and will fade on 2-3 days



SDF before CCT

After CCT